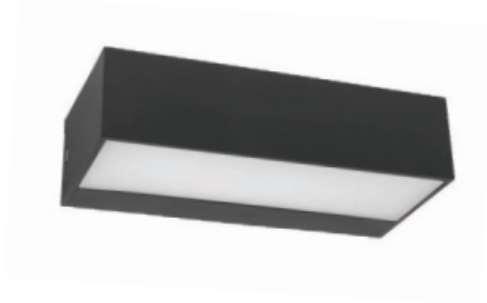


HISENS

HS-EX511-1/HS-EX511-2

Wall Light



SPECIFICATIONS

Wattage: 9W / 12W	Input Voltage: 240V
CCT: 3000K	Length/Dia (mm): 170mm / 226mm
Height (mm): 45mm / 87mm	IP Rating: IP65
Lumen: 600lm / 900lm	Body Material: ABS+PC 1
CRI: 80+	Mounting Type: Surface Mount
LED Type: SMD LED Chip	Body Color: Dark Grey / White
Brand: Hisens	Warranty: 3 Years

